

ULTRACOMPACT PRECISION ECHOSOUNDER

Dual Frequency ECHOLOGGER Exx D24 – 200kHz / 450kHz

The **ECHOLOGGER** series are a family of compact sonar altimeters suitable for many different applications, such as:

- Sea Bed Mapping
- Sediment Transportation Monitoring
- Bridge Scour Monitoring
- Harbour Security
- Wave/Tide Monitoring



Features

- Real-time backscatter data collection along full water columns
- Ultra compact
- Ideal for navigation of ROV/AUVs
- Serial interface (RS232, 485, 422 or USB)
- Multi-node interface supported with RS485 (<32 units)
- Compatible with Hypack, Topcon receiver, HydroPro (Trimble)
- Seacon underwater wet connector in place
- User friendly GUI software provided for instant image update
- Tilt sensor integrated as standard
- Real-time backscatter data collection along full water columns
- Depth ratings: 100m (6000m for non-USB version)
- Plug & Play with USB (EU D24)

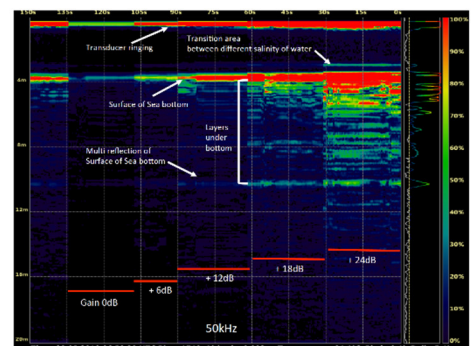


Options

USB or RS-232, RS-422 or RS-485 data output (top or side connector)

Software

Dedicated control software is included though the echo sounder is also compatible with *Hypack*, *Topcon receiver*, or *HydroPro* and can be commanded via any terminal programme.



Specifications

Acoustic Frequency	200 kHz / 450 KHz
Beam width	10°/5° Conical (- 3dB)
Transmit Pulse Width	10µsec – 200µsec
Transmit Power	50W max (adjustable)
Ranges	200 kHz: 0.5 – 200m. 450 kHz: 0.15 – 100m
Repetition (Ping)	100 Hz max
Sampling Rate (profiling mode)	100 kHz max (adjustable or auto)
Water Column Resolution	~7.5 mm (@ 100kHz sampling rate)
Altimeter Range Resolution	<1.0 mm
Temperature Resolution	0.1 °C
Tilt sensor	Dual-axis (Roll & Pitch) ± 90° Inclination data accuracy 0.1°
Digital Output Interface	RS-232, RS-485, or USB
Communication Speed Data	4800 – 921600, 3M baud (115200 baud default)
Output Format	ASCII TXT, NMEA 0183, or user defined (optional)
Configuration and Data reading	Echologger Control Program or any terminal program
Operation Temperature	- 10°C – + 50°C
Power supply	8 - 75 Vdc, 2W max (USB self-powered)
Housing (Std depth)	ECT D24, EU D24 - Acetal. ECS D24 - Aluminium (anodised)
Connector	SEACON (EU D24 - LTW 12-05PMMS-SH8003 & 5m USB 2.0 Cable)
Operating Depth	Standard - 100m (EU400: 5m). Deeper options available.
Dimensions (excluding connector)	EU D24: D 56mm x L 80mm ECS D24: D 55mm x L 70mm
Weight	ECT D24 - 280g, ECS D24 - 320g, EU D24 – 430g



Swale Technologies Ltd

6 Greenacres, Monument Park, Chalgrove, Oxfordshire OX44 7RW, UK
 Tel: +44 (0)1865 582265 - Sales@swaletechnologies.com - www.swaleocean.co.uk