



SWALE OCEANOGRAPHIC

Side Scan Sonar

SonarBeam® supplies single, dual and multibeam side scan sonar systems for commercial and military applications, with a history of providing some of the best quality high-resolution imaging in the industry.



SONARBEAM - high resolution images at competitive prices.

- Single Frequency: 100, 400, 900, 1250kHz
- Dual Frequency: 100/400, 400/900, 400/1250kHz
- Multi Beam: 455kHz (3, 5 beams)
- Portable topside processor
- Safety Pin: Up to 200 kg Shear Strength,
- Compatible with Hypack/GeoDas/SonarWiz
- Real time post-processing mosaic software
- Kevlar reinforced tow cable
- Motion / Depth / Altimeter sensor
- Location Beacon

RealScan

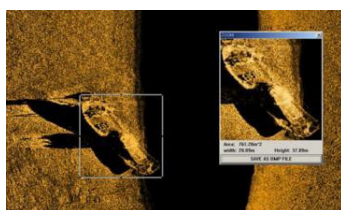
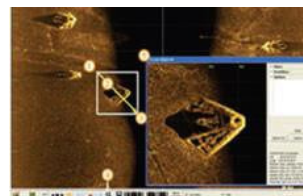
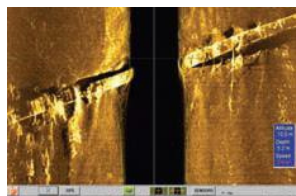
SonarBeam Real Time Operating Software

- Operating System: Win XP Pro, Vista, Windows 7
- Shows the towfish's course
- Automatic gain control function
- Real-Time support of the towfish's depth and altitude.
- Real-Time support of Roll, Pitch & Heading)
- Image filtering & target marking
- Transducer protection function
- XTF File format & GPS & target image (JPG, PNG)
- Survey route planner & screenshot function

PostScan






SonarBeam Post-Processing Software

- Operating System: Win XP Pro, Vista, Windows 7
- Mosaic & Partial Mosaic function
- User control of the mosaic image resolution
- Various mosaic output formats (PNG, BMP, JPG, TIF)
- KML file & GeoTiff file support
- Text file support of recorded towfish information (Coordinates, altitude, depth, speed etc.)
- Course filter function & altitude line correction function
- Target 1x1 scale image capture
- XYZ mosaic & image save function
- Target measurement & image zoom function



SWALE TECHNOLOGIES Ltd

Unit 51G, Rm48 Whitehill & Bordon Enterprise Park, Budds Lane, Bordon, GU35 0FJ, UK
Tel: +44 (0)1420 473334 Email: Sales@swaletechnologies.com www.swaleocean.co.uk

PART	S-150P	S-150A	S-150D	400MP	400M
Towfish					
Material	Stainless Steel			Aluminium	Stainless Steel
Size	900×ø89 (mm)	1,026×ø89 (mm)	1,360×ø112 (mm)	1,200×ø122 (mm)	2,000×ø160 (mm)
Weight	12 kg (in air)	16 kg (in air)	32 kg (in air)	35 kg (in air)	85 kg (in air)
Frequency	<ul style="list-style-type: none"> ▪ Single Frequency: 400 , 900, 1250 kHz ▪ Dual Frequency: 400/900, 400/1250 kHz 		<ul style="list-style-type: none"> ▪ Single:100, 400, 900, 1250 kHz ▪ Dual:100/400, 400/900, 400/1250 kHz 	<ul style="list-style-type: none"> ▪ Multi Beam: 455kHz (3 beams) 	<ul style="list-style-type: none"> ▪ Multi Beam: 455kHz (5 beams)
Transducer Radiation	<ul style="list-style-type: none"> ▪ 100 kHz: 1.2 degree (H), 40 degree (V) ▪ 400 kHz: 0.3 degree (H), 40 degree (V) ▪ 900 kHz: 0.3 degree (H), 40 degree (V) ▪ 1,250 kHz: 0.3 degree (H), 30 degree (V) 			<ul style="list-style-type: none"> ▪ 455 kHz: 0.23 degree (H), 45 degree (V) 	
Beam Tilt	20° down	10, 20, 30° down	5, 10, 15, 20, 25° down		20° down
Pulse	100 kHz: 50 ~ 200 µs, 400 kHz : 25 ~ 150 µs,		900 kHz : 15 ~ 50 µs,	1250 kHz :10 ~ 25 µs,	455 kHz: 50 ~ 200 µs (CW/Chirp)
Swath (Max.)	100 kHz: 1000 m, 400 kHz: 300 m, 900 kHz: 100 m,		1250 kHz: 60 m, 455 kHz: 300m		
Altimeter	N/A	200 kHz, 20 deg.		200 or 400kHz, 20 deg.	
Depth Sensor	±0.5% Full Scale				
Towing Speed	2 ~ 8 knots			Up to 12 knots	Up to 16 knots
Operating Depth	100 m	300 m		500 m (2000m option)	
Safety Pin	Up to 200 kg				